

MOTOMAN MH24-10

Handling with the MH-series



With its long arm, the 6-axis MOTOMAN MH24-10 high-speed robot offers the greatest reach in its class (max. 2010 mm) and a high payload capacity of 10 kg.

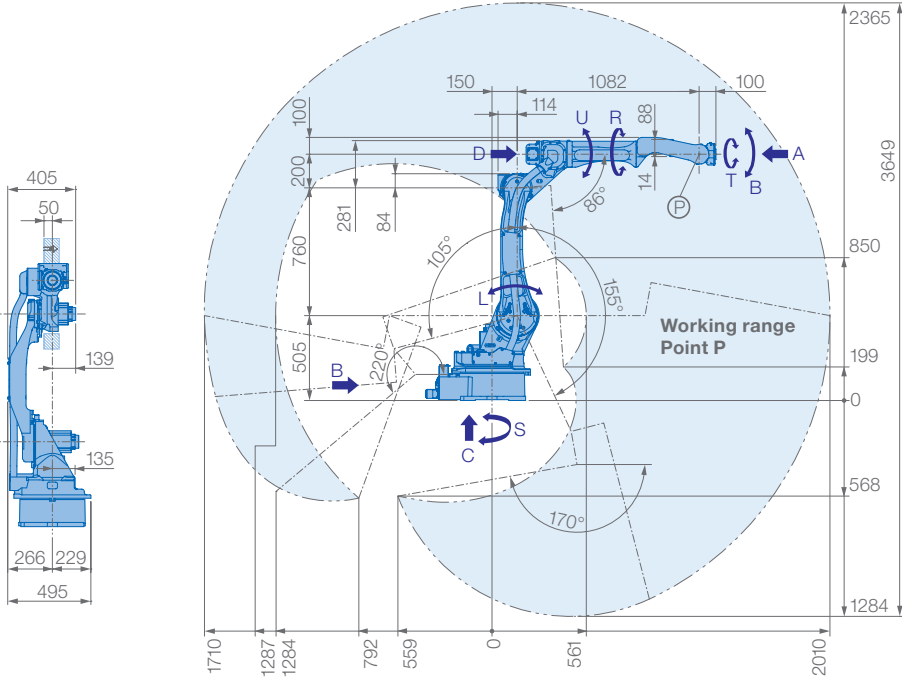
With the extended hollow structure (diameter 50 mm) of the upper arm, this robot enables internal routing of the media package, thereby increasing its service life and reducing interference contours.

With its streamlined design, the MOTOMAN MH24-10 has a minimal footprint, enabling multiple manipulators to be lined up close together.

Furthermore, its fast motion sequences and high repeatability ensure high work piece output.

KEY BENEFITS

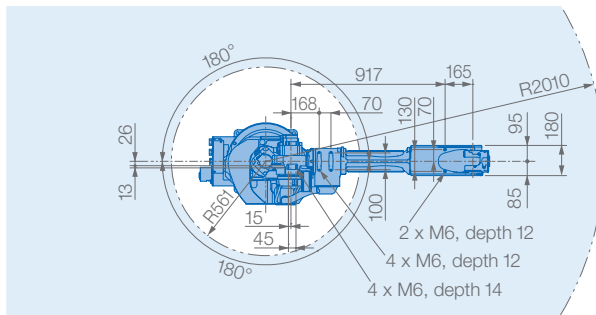
- Greatest reach in its class: 2010 mm
- High payload capacity: 10 kg
- Hollow front arm:
 - Diameter 50 mm
 - Minimized interference contours
- Streamlined design
- High productivity



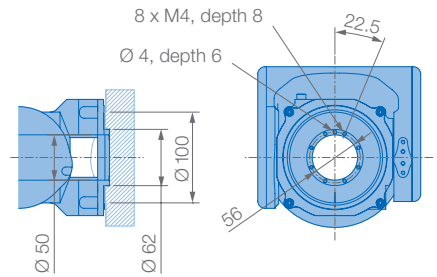
Please note wall mounting option:
±30° S-axis limit

Please note ceiling mounting option:
Please notice working range of B-axis

Please note tilted robot:
0°–90° limitation of S-axis, details on request



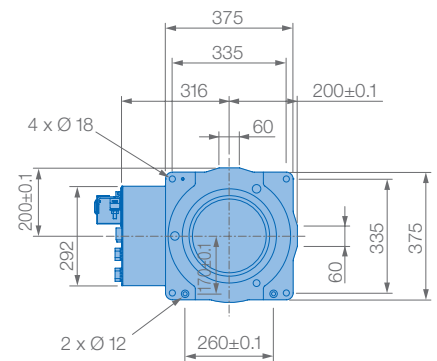
View A



View B

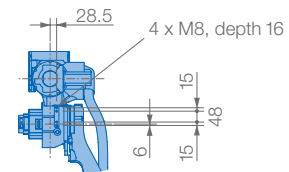


View C



Mounting options: Floor, ceiling, wall
Protection class: IP54/67

View D



Specifications MH24-10						
Axes	Maximum motion range [°]	Maximum speed [°/sec.]	Allowable moment [Nm]	Allowable moment of inertia [kg · m ²]	Controlled axes	
					Max. payload [kg]	
S	±180	197	–	–	6	
L	+155/–105	190	–	–	10	
U	+250/–170	210	–	–		Repeatability [mm]
R	±200	410	22.0	0.65		±0.08
B	±135	410	22.0	0.65		Max. working range R [mm]
T	±450	610	9.8	0.17		2010
						Temperature [°C]
						0 to +45
						Humidity [%]
						20 – 80
						Weight [kg]
						280
						Power supply, average [KVA]
						2.0

YASKAWA Europe GmbH

Robotics Division
Yaskawastraße 1
85391 Allershausen
Germany

Tel. +49 (0) 8166 90-0
robotics@yaskawa.eu.com
www.yaskawa.eu.com

YR-MH00024-A10
B-09-2018, A-No. 179116