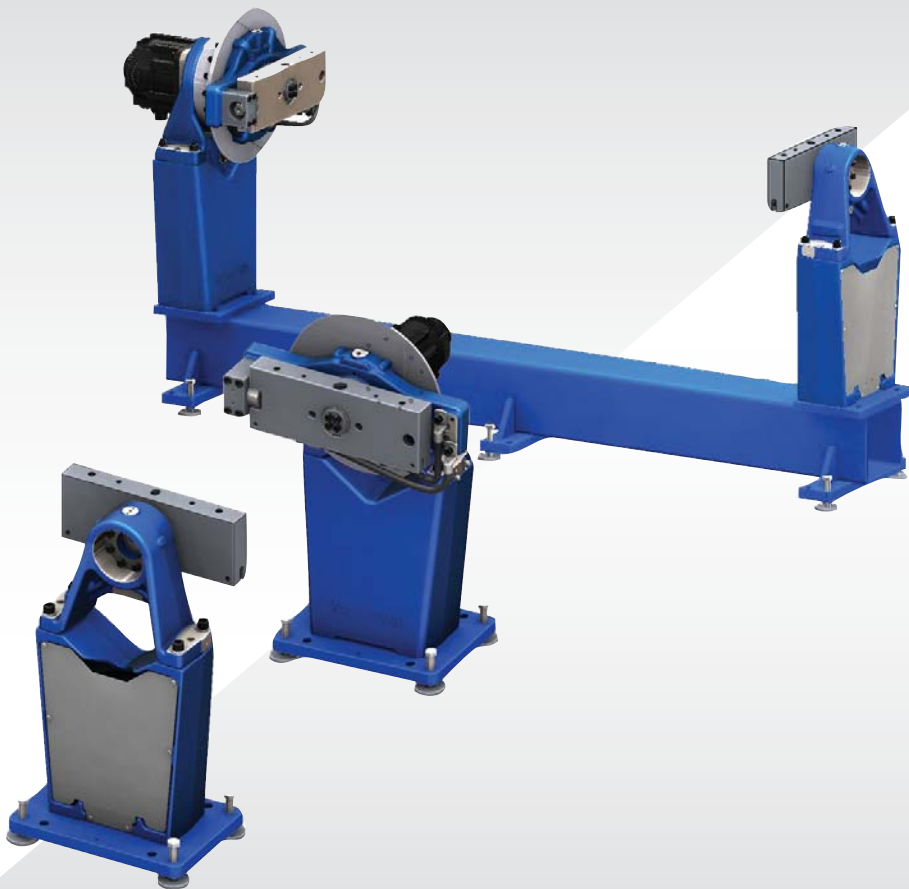


YASKAWA

H-Series

Positioners for horizontal rotation with MotoMount fixture mounting system.



Controlled by
DX200

One station positioner

One station positioner

The H-series is a one station positioner for workpieces that requires rotation about one axis. The free standing headstock can be mounted directly on the floor at an appropriate distance from the tailstock T. Head- and tailstock must always be used together.

The HTC is equipped with a tailstock, which is mounted on a track in a fixed position from the headstock. Several fixture distances are available in this series.

Key benefits

- Patented MotoMount fixture bracket that eliminates part warping.
- Optional media package (signals, air, current).
- Modular design, which also allows for different fixture sizes.

Models

- Free standing head- and tailstock, H and T.
- Head- and tailstock on a track, HTC.



Options

- Direct air supply 2x 3/8".
- Controlled air supply 2x 3/8".
- Slipping devices with I/O signals, Fieldbus and Profinet.

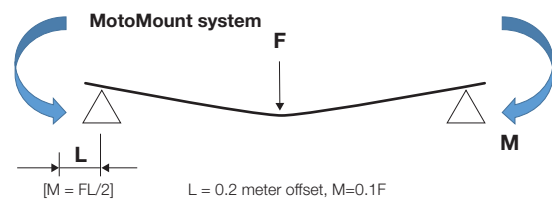
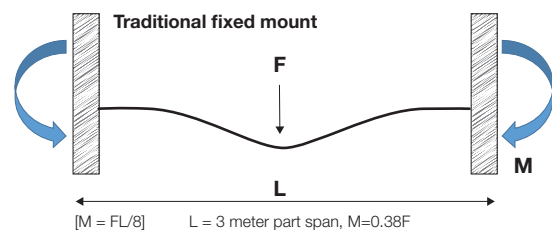
MotoMount fixture brackets

The patented MotoMount fixture mounting system will reduce the stress close to seven times or more, as the span between the fixture discs goes beyond three meters.

MotoMount will increase the positioner lifetime and improve welding repeatability while reducing the implementation cost. It allows for simplified tooling, and lower precision mounting holes while making fixture changeover faster and easier. By reducing the stress and wear on the positioner and fixture, part warping from load stress is eliminated.

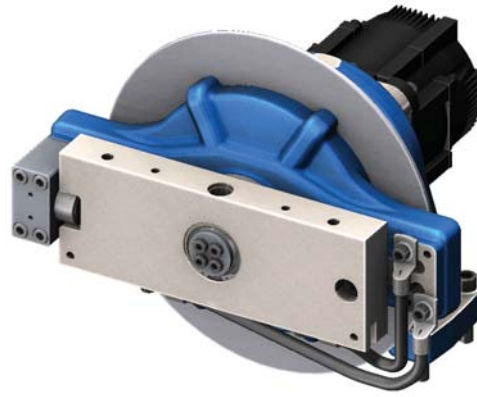
Key benefits

- Improved repeatability.
- Reduce stress and extend lifetime of structures.
- Adaptable for existing fixtures.
- Allows for simplified tooling.
- Fast and easy fixture changeover.



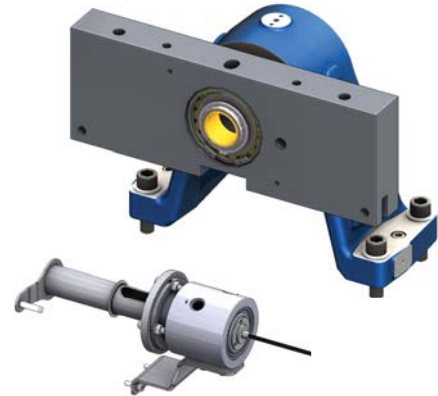
Headstock module

- Precision controlled rotary motion.
- Common footprint and rotation heights.
- Equipped with MotoMount fixture brackets.
- Weld ground brush included as standard.
- Additional brushes as option.

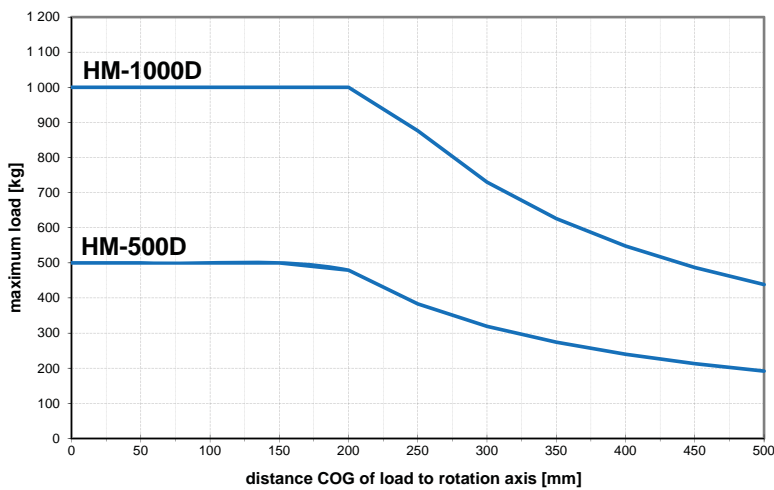


Tailstock module

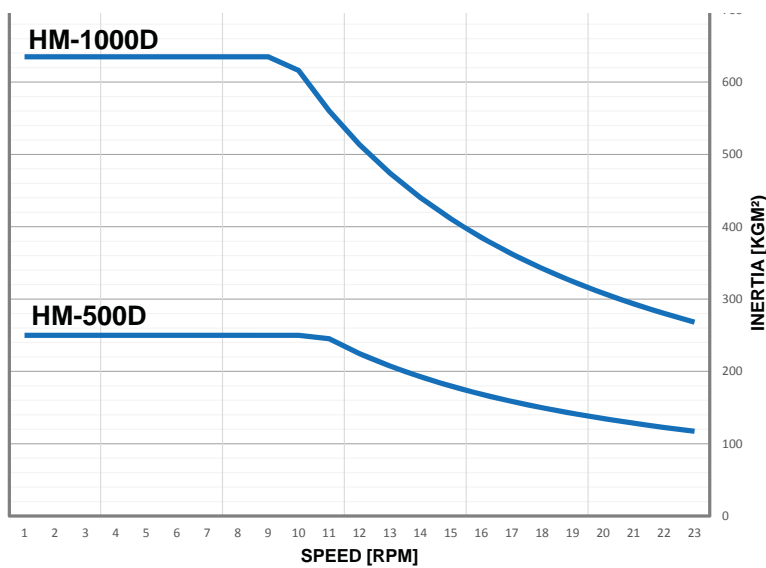
- Allows for deviations in fixture lengths.
- Equipped with MotoMount fixture brackets.
- Options: direct air, controlled air, slipping with signals (I/O, Fieldbus, Profinet).



Offset payload



Inertia



YASKAWA Headquarters

YASKAWA Europe GmbH
Robotic Division
Yaskawastraße 1, DE-85391 Allershausen
GERMANY
Phone: +49 81 66/90-0
www.yaskawa.eu.com

YASKAWA Group

AT YASKAWA Europe GmbH
Vienna +43-1-707 9324 15

CZ YASKAWA Czech s.r.o.
Rudná u Prahy +420-257 941 718

DE YASKAWA Europe GmbH
Allershausen +49-8166-90-0

ES YASKAWA Iberica S.L.
Gavà +34-93-6303478

FI YASKAWA Finland Oy
Turku +358-403000600

FR YASKAWA France S.A.
Nantes +33-2-40131919

IL YASKAWA Europe Technology Ltd
Rosh Ha'ayin +972-3-9030412

IT YASKAWA Italia SRL
Torino +39-011-9005833

NL YASKAWA Benelux B.V.
Son +31 40-2895500

PL YASKAWA Polska Sp. z o.o.
Wrocław +48 71 792 86 70

RU YASKAWA Nordic AB
Moscow +7 495 6442409

SE YASKAWA Nordic AB
Torsås +46-480-417800

SI YASKAWA Slovenia d.o.o
Ribnica +386-1-8372-410

SK YASKAWA Europe GmbH, o.z.
Bratislava +421 2 6828 6535

TR YASKAWA Turkey Elektrik Ticaret Limited Sirketi
Ümraniye-Istanbul +90 216 5273450

UK YASKAWA UK Ltd
Banbury +44-1295-272755

ZA YASKAWA Southern Africa PTY Ltd
Johannesburg +27-11-6083182

Distributors

BG Kammarton Bulgaria Ltd
Sofia +359 (02) 926 6060

CH MESSER Eutectic Castolin Switzerland S.A.
Dällikon +41-44-847 17 17

DK Robotcenter Danmark
Horsens +45 7022 2477

EE RKR Seadmed OÜ
Tallin +372 68 35 235

GR Kouvalias Robotics
Avlona +30-22950 42902

HU Flexman Robotics Kft
Budapest +36 30 951 0065

LT Profibus UAB
Panevezys +370-45-518575

NO Skala Robotech as
Lierstranda +47-32240600

PT Roboplan Lda
Aveiro +351 234 943 900

RO Sam Robotics srl
Timisoara +40 720 279 866

RO S.C. MPL Automation S.R.L.
Satu Mare +40 261 750 741